

public house

FUNCTION AND EVENTS PACKAGE

263 Adelaide Terrace

Perth WA 6000

t - 6117 0675

e - functions@publichouseperth.com.au

w - publichouseperth.com.au





Welcome to Public House

Public House is located on Adelaide Terrace in the Perth CBD. We offer both indoor and outdoor spaces with a friendly relaxed atmosphere. Public House has a range of beautifully designed spaces, combining timber and post-modern industrial furnishings & finishes, we have an area to suit your wants and needs.

Events we cater for:

Weddings
Cocktail Events
Sundowners

Engagements
Product Launches
Private Dinners

Birthdays
Corporate
Networking

Conveniently located within walking distance of the Perth Concert Hall, Public House provides easy travel access for guests and suppliers. There are also a number of loading bays on Victoria Avenue and parking options close to the building to suit large-scale events that require extensive bump-in.

For further information or to arrange a time to view the spaces, please contact our functions & events team on 08 63369780 or email functions@publichouseperth.com.au.



Spaces

PRIVATE DINING ROOM

60 people COCKTAIL STYLE | 40 people SEATED

Our Private Dining Room is equipped with its own private bar, PA system and an inbuilt projector. The frosted glass doors can easily be moved to open up the room to the restaurant, or keep them closed for a completely private event. The flexibility is yours. This space is well suited for seated dinners, conference meetings, weddings, birthday celebrations and much more.



RESTAURANT

80 people COCKTAIL STYLE | 60 people SEATED

Whether you are after a relaxed or formal setting, our A La Carte restaurant is ideal for lunches or dinners. Dining at Public House is like eating at home with your family and friends. Food cooked slowly with love and passion showcasing the best local produce WA has to offer. The restaurant area can also become an extension of our Private Dining Room for larger group functions.

Spaces

THE LOUNGE

40 people COCKTAIL STYLE | 20 people SEATED

Tucked away around the corner of our main bar, our Lounge area is the ideal space for intimate social functions. This hidden gem has lounge chair seating accompanied with high top tables and plenty of space for guests to mingle. With easy access to the bar, guests can watch our skilful bartender's pour Western Australian wines & beers or whip up a variety of cocktails.



ALFRESCO - East or West

40 people COCKTAIL STYLE | 20 people SEATED

Escape the hustle and bustle of the inner city. Soak up the sun and fresh air whilst looking out onto Adelaide Terrace. Our alfresco area is the perfect space for hosting social events such as sundowners and after work drinks.

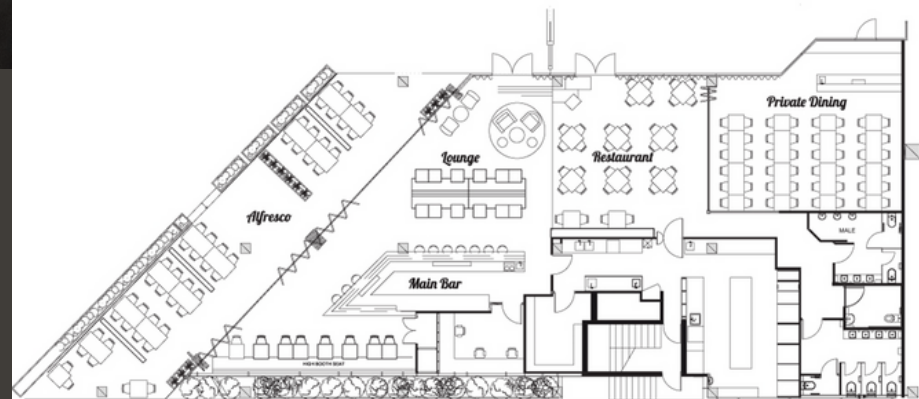


Spaces

VENUE EXCLUSIVE

300 people COCKTAIL STYLE | 150 people SEATED

Looking to completely WOW your guests? Public House can be hired out exclusively so you can impress your clients, colleagues or friends with a private event. Whether you're hosting a cocktail function, corporate event, product launch, wedding reception or anything in between, Public House has a variety of unique areas and the flexibility to guarantee every guest has an unforgettable experience.



Grazers & Substantials

savoury

bruschetta (v) - roasted mixed vegetables, basil, balsamic drizzle - 3

empanada (v) - sweet potato, charred corn, black bean - 5

crumbed garlic mushrooms (v) - panko crumbed button mushroom, garlic cream - 4

crispy prawn cake (gfo) - sweet chilli dipping sauce - 5

shredded chicken mini tacos - mexican spiced shredded chicken, guacamole, lettuce, sour cream, crispy corn tortilla - 4

cauliflower cheese spring roll (v) - hot cheese dip - 4

gourmet pies - choose from - beef & beer, beef rendang, vegetarian, butter chicken - 4

pumpkin onion feta tart (v) - roasted pumpkin, caramelised onion, feta - 4

cheeseburger - meat pattie, cheese, tomato sauce, mustard - 5 slider // 10 burger

skewers (gf) - choose from chicken, beef, lamb or crumbed haloumi - 5

tempura fish - tartare dipping sauce - fingers 4 // with fries 10

rare roast beef - rye bread with horseradish cream - 5

meatballs (gf) - tomato chutney relish - 4

zucchini & corn fritters (v, gf) - spicy yoghurt riata - 4

grandmas homemade sausage rolls - tomato dipping sauce - 3

buttermilk chicken - lettuce, tomato, aioli - 5 slider // 10 burger

german dog - german sausage, sauerkraut, mustard - 5 half // 10 whole

sweet

house made doughnut (v) - caramel sauce - 4

chocolate tart (v) - berry coulis - 4

assorted flavoured macarons (v) - 4

CHEF SELECTED PLATTERS \$75

Our platters are a selection of items from our a-la-carte and grazers menu choosen by our Chef & are all identical.

Each platter is suitable for between 4-5 people.



Sitdown Menu

to begin

house baked mini sourdough

starter

roasted vegetable terrine (v, gf) - mesclun with balsamic dressed

creamy garlic prawns & squid (gf) - steamed rice

braised beef shin - potato gnocchi, spinach, parmesan

fill you up

250g dry aged sirloin (gf, n) - sweet potato puree, broccolini, tomato chutney, macadamia dukkah

prosciutto wrapped chicken (gfo) - tomato & mixed bean sumo, house baked italian bread

wa barramundi (gf) - steamed coconut rice, green beans, red curry dressing

baked harissa maple cauliflower (v, gf) - pumpkin hummus, watercress, chick peas, tumeric yoghurt dressing

to share

garden salad

finish you off

cinnamon sugar doughnuts (v) - warm chocolate sauce, strawberry compote, cream

baked lemon cheesecake (v, gf) - lemon curd, double cream

apple raspberry almond tart (v, n) - vanilla bean ice cream



Our 2 or 3 course menu is ideal for groups of up to 30 guests. Your guests will be able to choose their own meal to suit their individual tastes.

2 courses – \$50.00 p.p.

3 courses – \$60.00 p.p.

For larger groups we can arrange a suitable alternate drop menu, please contact our team for more information

While we will endeavour to accommodate customers food allergies or intolerances, we cannot guarantee completely allergy-free meals. This is due to the presence of trace allergens in our kitchen and supplied ingredients..



Daytime Packages

MORNING OR AFTERNOON MEETINGS

Individual Snack Box - \$20.00 p.p.

Packs contain - grandmas homemade sausage roll, quiche, homemade muffin, fresh fruit

HALF DAY PACKAGE

Including either morning or afternoon tea option plus lunch platters - \$35.00 p.p.

Lunch platters contain - assortment of luncheon burgers, salad bowls, fries with aioli
:

FULL DAY PACKAGE

Includes morning and afternoon tea plus lunch options - \$45.00 p.p.

ALL conference packages include unlimited self-serve tea, coffee and water

The Private Dining Room contains access to AV and projector facilities

Please enquire if you need any assistance with obtaining equipment for your conference.

**Room hire fees may apply if minimum spends are not met.*

Beverage Options

OPTION 1 - HOURLY BEVERAGE PACKAGES

TIER 1

Wine - *McPherson NV Sparkling (WA), Grandstand Sauvignon Blanc Semillion (WA), Pepperilly Rose (WA), Grandstand Shiraz (WA)*

Tap Beers - *Perth Local Lager, Great Northern 3.5 and Singlefin Summer Ale*
Soft Drinks

2 hours - \$40 per person, extra \$10 per hour thereafter

TIER 2

Wine - *The Lane "Lois" Blanc de Blanc (SA), Robert Oatley Sauvignon Blanc (WA), Vinaceous Sirenya Pinot Grigio (WA), Ad Hoc Hen and Chicken Chardonnay (WA), Robert Oatley "Signature Series" Pinot Noir (WA), Hentley Farm Villian & Vixen Shiraz (SA)*
Tap Beer - *All Available*
Soft drinks

2 hours- \$50 per person, extra \$10 per hour thereafter

HOUSE SPIRIT ADD ON - extra \$15 pp per hour

Spirits - *Ketel One Vodka, Tanqueray Gin, Pampero Blanco Rrum, Jim Beam White Label, Johnny Walker Black Label*



Beverage Options

OPTION 2 - BAR TAB - DRINKS ON CONSUMPTION

An on consumption bar tab outlining your beverage choices, restrictions and limit can be set up prior to your function. This can be revised with the function manager at any time as the event progresses and amended if required.

*Please ask to see our current beverage list & pricing.

OPTION 3 - GUEST TO PURCHASE OWN BEVERAGES

Function guests pay for their own drinks on consumption (as they order) there are no costs passed on to the function organiser.

COCKTAIL ON ARRIVAL

Want to up the WOW factor? Add a cocktail on arrival to your package.
Please enquire regarding our cocktail options.



Additional Info

AV, Staging and Lighting

Projector, screen & PA system are available to use free of charge when hiring the Private Dining Room. Any other AV must be organised and paid for by the host. We do have a selection of staging and lighting companies who we can recommend.

Facilities

Public House is wheelchair accessible with the venue being single level, there is a disabled toilet within the premises.

Additional Staff

If you require additional staff for your event, please talk to your event coordinator. We are able to assist at a rate of \$45 per staff member per hour, minimum of 3 hours.

Parking

In addition to street parking on both Victoria Avenue and Terrace Road, there are 2 paid parking complexes on Terrace Road which both include disabled bays.





public house

263 ADELAIDE TERRACE

PERTH WA 6000

T - 08 6117 0675

E - FUNCTIONS@PUBLICHOUSEPERTH.COM.AU

W - PUBLICHOUSEPERTH.COM.AU

